

98 PD SP

WET/DRY VACUUM CLEANERS WITH SHOCKPROOF CONTAINER

Wet/dry vacuum cleaner equipped with two motors separately switchable. Great capacity and performance. The "ShockProof" (SP) version of the well known 98 model is even sturdier, thanks to the innovative impact resistant container in plastic material. Great manoeuvrability thanks to the practical handle and the large diameter wheels. Supplied with a drain hose to easily empty the 90 liters tank. 98 PD SP is the ideal solution for large areas and heavy duty cleaning tasks. Nylon filter and cartridge filters (standard and HEPA) optional.



Two separately switchable motors



Quick hose coupling



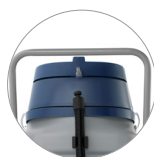
Cage with float valve



Textile filter



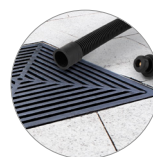
Shockproof container in plastic material



Practical handle



Front swivel castor wheels and large diameter rear wheels



Drain hose

PRODUCT IDENTIFICATION

TYPE	REF. NO.	PIECES/PALLET
98 PD SP	17963811950	8

TECHNICAL DATA

Voltage - Frequency	220-240 V~	50/60 Hz
Max power rating	W	2300
Rated power (nominal power)	W	1900
Container capacity	l	90
Useful capacity	l	56
Filtering surface	m ²	0,4
Air flow rate	l/s	100
Vacuum	mbar	190
Noise level	db(A)	65
IP code		IPX4
Power supply cable	m	10
Weight (without accessories)	Kg	23,1
Dimensions	mm	620x480x930

STANDARD ACCESSORIES

TYPE	REF. NO.
Flexible hose 2,5 m	01-410
Squeegee tool	01-421
Floor tool	01-420
Round brush	2511615
Crevice tool	2511610
Suction tube "S"	01-440
Textile filter	6830000

OPTIONAL ACCESSORIES

TYPE	REF. NO.
Extension tube PVC 0,5 m	2512000
Upholstery tool	01-431
Nylon filter (filtering surface 0,75 m ²)	3001220
Cartridge filter (filtering surface 1,06 m ²)	2512743
HEPA Cartridge filter (filtering surface 1,06 m ²)	2512744