

# C 150 U 13


 PATENTED

## BURNISHER 20" - 1.500 RPM

Professional ultra-high-speed machine for polishing. Ideal for contract cleaners, floors fitters, public clients. Very strong induction motor for long lifetime and great performance. Direct drive. Vacuuming the dust by a passive system thereby reducing dust impact while polishing. Brush pressure adjustment knob Unique floating pad system (patent pending). Newest handle, ergonomics, safety and innovative, possible height regulation. Low working height for cleaning under furniture.



Floating pad drive system



Non marking wheels



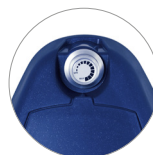
Articulation of the handle



Handle (front view)



Spray electric system (optional)



Brush pressure adjustment



Display

### PRODUCT IDENTIFICATION

#### TYPE

C 150 U 13

#### REF. NO.

00-198EL

#### PIECES/PALLET

1

### TECHNICAL DATA

Working width - Ø brush	mm	505
Brush speed	rpm	1500
Voltage	V	220 - 240
Frequency	Hz	50
Brush motor rating	W	1300
Brush contact pressure	g/cm <sup>2</sup>	0÷5
Electric spray attachment		Yes
Noise level	db(A)	<56
Transmission		Direct
IP code		IPX4
Power supply cable	m	15
Weight (without accessories)	Kg	44
Dimensions	mm	1130x790x560

### OPTIONAL ACCESSORIES

TYPE	REF. NO.
Spray electric system	00-256EL
Paper filter bag (x 5)	6595050
Gorilla disc 20" (x 5)	06-404-23