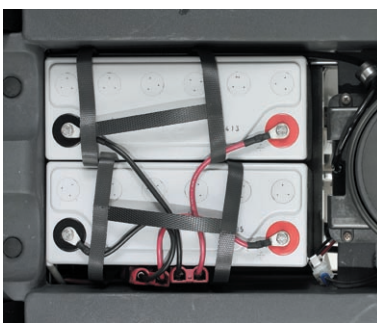


# RAPID 15

The most suitable solution  
for small-medium areas



Smart “curved” design,  
compact dimensions



**XFC batteries:** up to 2 hours  
running time (only 1,5 hours for  
recharging)

The small walk behind scrubber dryer **Rapid 15**, has been further improved in its structural features and functionalities, so confirming itself a point of reference in the small scrubber-driers' segment.

A complete set of combined and synergical solutions – like the new adjustable brush head and the external wheel, the innovative squeegee with pedal lifting system, the remarkable running time (**up to 2 hours** in the Long Run version) - makes **Rapid 15** the most suitable solution for any cleaning task in small-medium areas.

Rapid 15 is today available in both cable and battery versions. And choosing the **Rapid 15 Long Run** battery version you get the maximum durability and performance.

## STANDARD ACCESSORIES

	Code	Model		Code	Model
Polipropylene brush $\varnothing$ (0.9)	40.0108.00	-	On board charger (Shuko plug 220-240V)	18.0032.00	Rapid 15 BC , C
Filling hose	30.0024.00	-	Battery set (2 pcs ) gel 25 Ah	18.0017.00	Rapid 15 BC
Front PU squeegee blade	39.0070.00	-	External charger (Shuko plug IP44 220-240 VAC)	18.0029.00	Rapid 15 Long Run
Rear PU squeegee blade	39.0071.00	-	Battery set (2 pcs ) XFC 12V 35 Ah Gel	18.0030.00	Rapid 15 Long Run

# RAPID 15

Compact and flexible,  
ideal for all environments  
and surfaces



**Adjustable head** by knob and external wheel, to make Rapid 15 flexible and suitable for any kind of floor

**New squeegee pedal lifting system**



**Easy access** to narrow/hard to reach areas



**Foldable/adjustable handle.**  
Rapid 15 is easy to park everywhere

**Rapid 15** distinctive feature is flexibility .

First of all in the brush head; the front knob allows the user to adjust the brush incidence to the floor, so ensuring a perfect adherence with any kind of accessory with excellent cleaning results.

The practical external wheel allows an easy height adjustment of the brush head, so preventing any overload of the brush motor. So **Rapid 15** can work successfully everywhere.

The squeegee system perfectly covers the water track in any condition, for excellent drying results. And the new pedal lifting system makes it today even more comfortable for the user and reliable.

So a complete set of innovative features, that together with the compact dimensions and the long battery life and running time, make **Rapid 15** the perfect solution for every environment and surface, above all in narrow spaces

Flyer RAPID 15 EN cod. 8050387 - Ed. 11.2013  
 Ghibil S.p.A. reserves the right to change specifications and accessories at all times.  
 The information contained herein is subject to change without notice and is not  
 warranted to be error-free. If you find any errors, please report them to us in writing.

## TECHNICAL DATA

	Code	Power supply	Tank capacity (sol/rec) l	Cleaning path mm	Squeegee width mm	Rated power W	Productivity (theor./practical) m <sup>2</sup> /h	Running time h	Noise level db(A)	Net Weight kg	Dimensions (l x w x h) mm
<b>RAPID 15 E 38</b>	10.0060.01	Cable 230 V 50Hz	15/16	385	450	620	1540/770	-	65	40	865x500x1100
<b>RAPID 15 M 38 C</b>	11.0050.01	Battery 24V	15/16	385	450	510	1540/920	1	65	40	865x500x1100
<b>RAPID 15 M 38 BC</b>	13.0050.01	Battery 24V	15/16	385	450	510	1540/920	1	65	40	865x500x1100
<b>RAPID 15M 38 BC Long Run</b>	13.0070.01	Battery 24V	15/16	385	450	510	1540/920	2	65	40	865x500x1100