

# HS R 110

## RIDE-ON SWEEPERS

HS R 110 is the compact ride-on sweeper ideal for cleaning medium and small areas, even those with narrow passages. The large cleaning width (860 mm) guarantees excellent sweeping performance thanks to a productivity of 6050 m<sup>2</sup>/h: to the 624 mm main brush must be added the width of the brush mounted on the right side arm (as standard equipment). The LSB version, which includes both side brushes, reaches 1100 mm of cleaning width. The three cartridge filters, easy to clean thanks to the electric filter shaker, and the suction on the right side brush to eliminate the dust raised during work, allow the operator to work safely. The main functions of the machine, easily selectable from the controls on the steering wheel, and the perfect visibility, both during transport and during work, guarantee the operator maximum comfort and ergonomics. The BC version is equipped with on board battery charger and batteries (12V).



Controls on the steering wheel



Left side brush arm (LSB version)



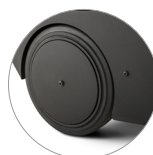
Side brush suction



Compact and manoeuvrable: U-Turn operation (only 190 cm)



Adjustable and ergonomic seat



Anti-puncture wheels

### PRODUCT IDENTIFICATION

TYPE	REF. NO.	PIECES/PALLET
HS R 110	10.8110.00	1
HS R 110 LSB (Left Side Brush)	12.8110.00	1
HS R 110 BC	13.8110.00	1
HS R 110 BC LSB (Left Side Brush)	17.8110.00	1

### TECHNICAL DATA

FEATURES			
Main brush cleaning width + right side brush + left side brush	mm	624 - 860 - 1100	
Productivity	m <sup>2</sup> /h	6050	
Power supply		Battery 24V	
Installed power	W	940	
Advancement		with traction	
IP code		IP 20	

#### BATTERIES

Type	Gel battery set (2 pcs) 12V 105Ah (*)		
Running time	h - min	2 h and 30 min	
Battery compartment dimensions x No	mm x No	450x400x270 x 1	

#### BRUSHES

Main brush length x No	mm x No	624 x 1	
Side brush diameter x No	mm x No	390 x 1	
Main brush motor	W	300	
Right side brush motor	W	60	

#### TRACTION

Motor rating	W	400	
Driving speed	km/h	6,5	
Hill climbing ability	%	10	

#### VACUUM AND DUST FILTERING SYSTEM

Motor rating	W	180	
Noise level	dB(A)	71	
Filter type - Material x No		Cartridge - Paper x 3	
Filtering surface - Dust Filter shaker	m <sup>2</sup>	3 - Electric	
Refuse container: position - emptying - capacity		Rear - Manual - 50 l	
Weight (without batteries)	Kg	185	
Dimensions	mm	1285x750x965	

### STANDARD ACCESSORIES

TYPE	REF. NO.
Main brush	40.0257.00
Polypropylene side brush (**)	40.0260.00
Electric filter shaker	---
Paper cartridge filter	39.0256.00
Liftable flap	---
Gel battery set (2 pcs) 12V 105Ah (*)	18.0001.00
On board charger 24V 12 A (*)	22.0683.00

### OPTIONAL ACCESSORIES

TYPE	REF. NO.
Polypropylene main brush	40.0258.00
Mixed steel side brush	40.0256.00
Front dust conveyor	25.0624.00
Polyester cartridge filter	37.0257.00
Front non-marking wheel	28.0045.00
Hour counter	34.0631.00

(\*) Only for BC version

(\*\*) 2 Brushes on standard equipment for LSB version