

# POWER D 80.2 P

## VACUUM CLEANERS

Vacuum cleaner equipped with 2 powerful and high efficiency New Generation motors separately switchable. Little weight and compact dimensions with high level performances. Exhaust air filter. High efficiency PTFE cartridge filter (M filtration class) always installed. Model equipped with the "SHOCKING VALVE" system: the semiautomatic filter cleaning system that assures an extreme duration of the filter and stops clogging, saturation and reduction of filtering capacity. Nylon filter, HEPA cartridge filter, paper filter bag (optional).



Motor switches



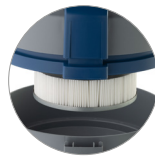
Gangway tool  
(optional)



Intake



Shocking valve



High efficiency  
cartridge filter (M  
filtration class)

## PRODUCT IDENTIFICATION

### TYPE

POWER D 80.2 P

### REF. NO.

14348611950

### PIECES/PALLET

8

## TECHNICAL DATA

Voltage - Frequency	220-240 V~	50/60 Hz
Max power rating	W	2500
Rated power (nominal power)	W	2200
Container capacity	l	80
Useful capacity	l	56
Useful dust bag capacity	l	19
Filtering surface (textile filter)	m <sup>2</sup>	0,4
Filtering surface (cartridge filter)	m <sup>2</sup>	1,2
Air flow rate	l/s	142
Vacuum	mbar	225
Sound level	db(A)	62
IP code	IPX4	
Power supply cable	m	10
Weight (without accessories)	Kg	21,7
Dimensions	mm	660x520x920

## STANDARD ACCESSORIES

### Ø 40

### TYPE

TYPE	REF. NO.
Flexible hose 2,5 m	6010500
Telescopic suction tube "S" (max 1 m)	2511606
Dry floor tool	6010000
Round brush	2511615
Crevice tool	2511610
PTFE cartridge filter (M filtration class)	2512742
Textile filter	6830000

## OPTIONAL ACCESSORIES

### TYPE

### REF. NO.

PVC extension tube (0,5 m)	2512000
Squeegee tool	6010011
Antifoam device	6200150
Nylon protection filter	3001016
Nylon filter (filtering surface 0,75 m <sup>2</sup> )	3001220
HEPA cartridge filter (filtering surface 1,20 m <sup>2</sup> )	2512761
Paper filter bag with cap l 19 x 10	6830030
Carpet brush	2512610
Gangway tool	6103054