

# POWER EXTRA 11 I/ Auto

## SPRAY-EXTRACTION CLEANERS

Despite the small size, Power Extra 11 is able to achieve the performance of a bigger professional machine. Ideal for the automotive sector and to clean every type of textile and moquette surface. The standard version consists of a 3m hose (Ø 40), the sprayex upholstery tool and the spray ex floor tool. The Auto version is equipped with spray-ex upholstery tools and above all with the 6 m spray-ex hose; perfect for the car interiors and for every hard to reach area. Equipped with a powerful pump (48 W), water spray rate 1,1 l/ min, pressure 7 bar 11 liters solution tank, easy to fill thanks to the filling port 12 liter recovery tank. Power Extra 11 can be easily drained either using the practical drain hose or removing the whole tank and emptying it. Separated pump control.



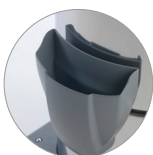
Hand spray-ex tool



Spray-ex floor tool



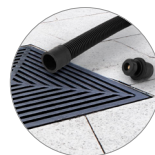
Spray-ex floor alu tool (optional)



Large and robust filling port



Nylon protection filter



Drain system



Practical and easy to use



Ideal for every type of textile surface

## PRODUCT IDENTIFICATION

| TYPE                  | REF. NO.    | PIECES/PALLET |
|-----------------------|-------------|---------------|
| POWER EXTRA 11 I      | 14758711950 | 4             |
| POWER EXTRA 11 I Auto | 14768711950 | 4             |

## TECHNICAL DATA

|                                 |            |             |
|---------------------------------|------------|-------------|
| Voltage - Frequency             | 220-240 V~ | 50/60 Hz    |
| Max power rating                | W          | 1250        |
| Rated power (nominal power)     | W          | 1100        |
| Cleaning solution tank          | l          | 11          |
| Useful capacity for dirty water | l          | 12          |
| Air flow rate                   | l/s        | 71          |
| Vacuum                          | mbar       | 235         |
| Pressure                        | bar        | 7           |
| Noise level                     | db(A)      | 60          |
| IP code                         |            | IPX4        |
| Power supply cable              | m          | 10          |
| Weight (without accessories)    | Kg         | 16,5        |
| Dimensions                      | mm         | 890x420x550 |

## STANDARD ACCESSORIES

| TYPE                         | REF. NO. |
|------------------------------|----------|
| Hand spray-ex tool Ø 40      | 7180074  |
| Flexible hose 3 m (*)        | 6493150  |
| Spray-ex floor tool Ø 40 (*) | 6935730  |
| Flexible hose 6 m (**)       | 6493151  |
| Nylon protection filter      | 3001009  |

## OPTIONAL ACCESSORIES

| TYPE                    | REF. NO. |
|-------------------------|----------|
| Spray-ex floor alu tool | 7180089  |

(\*) For Power Extra 11 I version

(\*\*) For Power Extra 11 I Auto version