

# POWER EXTRA 31 I

## SPRAY-EXTRACTION CLEANERS

Power Extra 31 is the top model of the range, suitable for every kind of application and cleaning task. Versatility and max performance (twin vac motors), declined and diversified in three versions, all with the classic stainless steel tanks. The standard version consists of a 3 m hose (Ø 40), the spray ex upholstery tool and the spray ex floor tool; this model is available either with the standard Ulka pump (48 W power, 1,1 l/min water spray rate, 7 bar pressure) or with the Ceme one (60 W power, 4,5 l/min water spray rate, 6 bar pressure). The Auto version (equipped with Ceme pump too) comes with spray-ex upholstery tool and above all with the 6 m spray-ex hose, perfect for the car interiors and for every hard to reach areas. 31 liters solution tank, easy to fill thanks to the filling port. 32 liter recovery tank, it can be easily drained either using the practical drain hose or removing the whole tank and emptying it. Separated pump control.



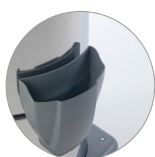
Hand spray-ex tool



Spray-ex floor tool



Spray-ex floor alu tool (optional)



Large and robust filling port



Nylon protection filter



Drain system



Practical and easy to use



Ideal for every type of textile surface

## PRODUCT IDENTIFICATION

| TYPE                       | REF. NO.    | PIECES/PALLET |
|----------------------------|-------------|---------------|
| POWER EXTRA 31 I ULKA      | 14528711951 | 2             |
| POWER EXTRA 31 I CEME      | 14528711950 | 2             |
| POWER EXTRA 31 I Auto CEME | 14538711950 | 2             |

## TECHNICAL DATA

|                                 |            |                   |
|---------------------------------|------------|-------------------|
| Voltage - Frequency             | 220-240 V~ | 50/60 Hz          |
| Max power rating                | W          | 2500              |
| Rated power (nominal power)     | W          | 2200              |
| Cleaning solution tank          | l          | 31                |
| Useful capacity for dirty water | l          | 32                |
| Air flow rate                   | l/s        | 142               |
| Vacuum                          | mbar       | 225               |
| Pressure                        | bar        | 7 (ULKA)/6 (CEME) |
| Sound level                     | db(A)      | 82                |
| IP code                         |            | IPX4              |
| Power supply cable              | m          | 10                |
| Weight (without accessories)    | Kg         | 26,5              |
| Dimensions                      | mm         | 960x630x550       |

## STANDARD ACCESSORIES

| TYPE                         | REF. NO. |
|------------------------------|----------|
| Hand spray-ex tool Ø 40      | 7180074  |
| Flexible hose 3 m (*)        | 6493150  |
| Spray-ex floor tool Ø 40 (*) | 6935730  |
| Flexible hose 6 m (**)       | 6493151  |
| Nylon protection filter      | 3001016  |

## OPTIONAL ACCESSORIES

| TYPE                    | REF. NO. |
|-------------------------|----------|
| Spray-ex floor alu tool | 7180089  |

(\*) For Power Extra 31 I Ulka / Ceme version

(\*\*) For power Extra 31 I Auto Ceme version